

# iFactory RTM



## Features

### Solution Ready Package

- MIC-770 V2: Intel® 10th Gen Xeon®/Core™ i CPU socket-type (LGA1200) with Intel® W480E chipset , 16GB/32GB DDR4 onboard memory
- MIC-7700: Intel® 6th/7th Gen Core™ i CPU socket-type (LGA1151) with Intel® Q170 chipset, 16GB/32GB DDR4 onboard memory
- UNO-238: 8th generation Intel® Core™ i processor with 4GB DDR4 onboard memory
- UNO-137: Intel® Atom™ E3940 processor with 4GB DDR3L onboard memory
- Supports data preprocessing to increase accuracy
- Easy configuration and simple dashboard for real time monitoring
- Quickly connect with Advantech iFactory cloud solutions through MQTT
- Supports event and alarm settings

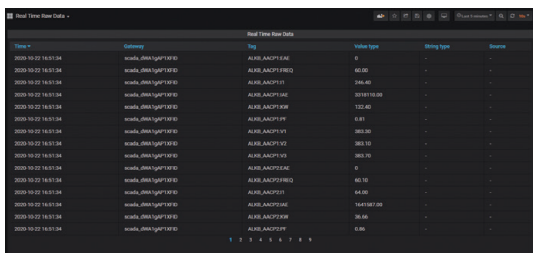
## Introduction

iFactory RTM (Real-Time Monitoring) is an IIoT solution which enables sensors and data to communicate with each other based on supported protocols. Through the easy configuration of the iFactory/RTM data acquisition software, you can create a simple visual dashboard which monitors real time data – allowing the user to monitor production data and configure events and settings. iFactory RTM also pre-processes and aggregates data, which reduces unnecessary relays to the cloud, thereby lowering overall solution cost. We also provide a total solution that allows you to upload pre-processed data through iFactory/RTM to our cloud solution through MQTT.

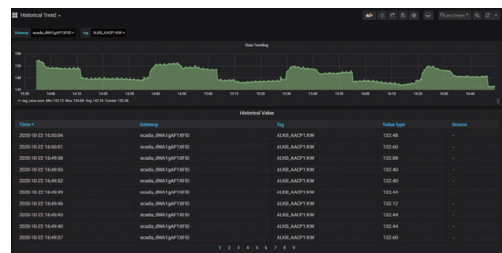
## Key Functions

### iFactory/RTM

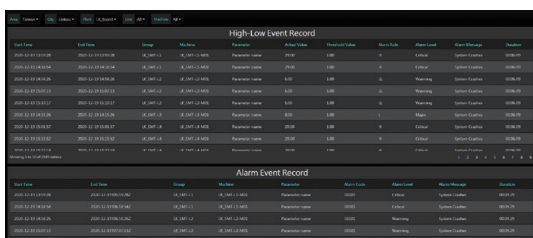
- Web gateway user interface for remote setting and maintenance.
- Simple dashboard for real time monitoring.
- Quickly connect with Advantech iFactory's cloud solutions through MQTT.
- Provides simple event and alarm settings.
- Lower data transition volume to cloud saves storage costs.
- 7-day historical data tracing.
- Easy software upgrades via Docker design.
- Supports 7-day continuous data transfer to the cloud.



Real-time Raw Data



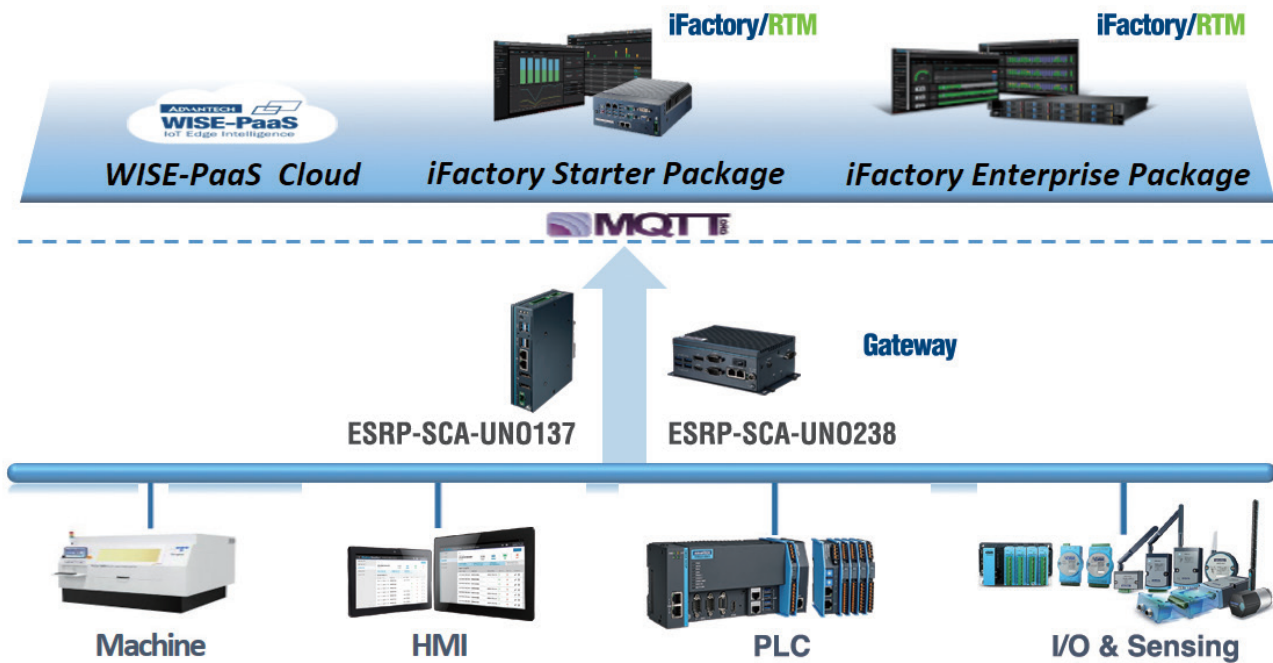
Historical Trends



Event and Alarm Management



Customized Dashboard



## Selection of Gateway Service

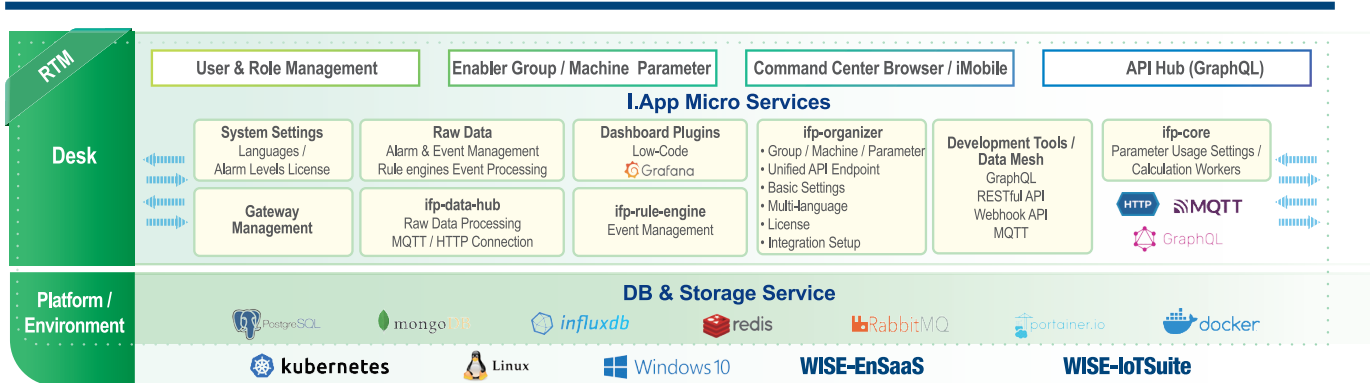
Part Number	ESRP-SCA-UNO137	ESRP-SCA-UNO238	
SRP Software	OS	Win10	
	User Interface	Graphical User Interface	
	Software	WebAccess Pro with 1500 tags	WebAccess Pro with 1500 tags
	Container Tech	Docker on Ubuntu	
	Database	InfluxDB Version 1.8 & Mongo Version 4	
	Customized Graphic Platform	Official Grafana/Dashboard	
	Browser	Supports HTML5 Browser (Recommend Google Chrome)	
	Language	English	
SRP Hardware	Hardware Platform	UNO-137	UNO-238
	CPU	Intel® Atom™ E3940 (1.33 GHz)	Intel® Core™ i5-8365UE (4.10 GHz)
	Memory	8 GB DDR3L	8GB DDR4
	Storage	128 GB SSD	32+256 GB SSD
	Power Supply Unit	Option	
	I/O & Port	2 x LAN 2 x COM 3 x USB 3.0 1 x USB 2.0 2 x DP 1.2 8 x DI 8 x DO 1 x M.2 1 x mPCIe	2 x GbE 4 x USB3.2 2 x RS-232/422/485 1 x HDMI, 1 x DP 1 x GPIO (8bit)
	Certifications	CE, FCC Class A, UL, CCC, BSMI	

## Ordering Information

Part Number	Description
ESRP-SCA-UNO137	UNO-137, 1500 tags, 128G SSD, Win10, SCADA
ESRP-SCA-UNO238	UNO-238, 1500 tags, 32+256G SSD, Win10, SCADA

## Optional Accessories

Part Number	Description
1702002600	Power cord, 3-pin, 10A 125V, 1.8M, UL type
1702031801	Power cord, 3-pin, 10A 250V, 1.8 M, UK type
1700018705	Power cord, 3-pin, 10A 250V, 1.8 M, EU type
1702002605	Power cord, ENEC 3-pin, 10A 250V, 1.8 M, EU type
AQD-SD4U16N24-SE	Optional DDR4-2400 Memory (16GB)



## Selection of Gateway Service

Part Number	IFS-RTM-U238L3A	IFS-RTM-U238L4A	
SRP Software	Software	iFactory/RTM 1000 tag/5s (suggested)	iFactory/RTM 2000 tag/5s (suggested)
	Container Tech	Docker on Ubuntu	
	Database	InfluxDB Version 1.8 & Mongo version 4	
	Customized Graphic Platform	WISE-PaaS/Dashboard (dashboard edge lite plan with multi-language)	
	Browser	Supports HTML5 Browser (recommend google chrome)	
	Language	English	
SRP Hardware	Hardware Platform	UNO-238-83N1A0	
	CPU	i3-8145UE, 2Core, 3.90 GHz	i5-8365UE, 4core, 4.10 GHz
	Memory	16GB DDR4 2666Mhz	32GB DDR4 2666Mhz
	Storage	128GB SSD SATA3	256GB SSD SATA3
	Power Supply Unit	Optional	
	Operating Temperature	-20 ~ 60°C (-4 ~ 140°F) @ 5 ~ 85% RH with 0.7m/s airflow	
	I/O & Port	2 x RS232/422/485 4 x USB 3.2	
	Certifications	CE, FCC , UL, CCC, BSMI	

## Ordering Information

Part Number	Description
IFS-RTM-U238L3A	UNO-238,i3,16G,128G,Linux,iFactory/RTM
IFS-RTM-U238L4A	UNO-238,i5,32G,256G,Linux,iFactory/RTM

## Optional Accessories

Part Number	Description
1702002600	Power cord, 3-pin, 10A 125V, 1.8M, UL type
1702031801	Power cord, 3-pin, 10A 250V, 1.8 M, UK type
1700018705	Power cord, 3-pin, 10A 250V, 1.8 M, EU type
1702002605	Power cord, ENEC 3-pin, 10A 250V, 1.8 M, EU type
AQD-SD4U16N24-SE	Optional DDR4-2400 Memory (16GB)

## Selection of Gateway Service

Solution Ready Package	Manufacturing Edge (M770-Linux)		
Part Number	IFS-RTM-M770L4A	IFS-RTM-M770L5A	
SRP Software	OS	AdvLinuxTU	
	Software	iFactory/RTM 2000 tags/s (suggested)	iFactory/RTM 4000 tags/s (suggested)
	Container Tech	Docker on Ubuntu	
	Database	InfluxDB Version 1.8 & Mongo version 4	
	Customized Graphic Platform	WISE-PaaS/Dashboard (dashboard edge lite plan with multi-language)	
	Browser	Supports HTML5 browser (recommend google chrome)	
SRP Hardware	Hardware Platform	MIC-770W-20A1	
	CPU	Intel Core 2.3G 12M, 6 core i5-10500TE	Intel Core 2.0G 16M, 8 core i7-10700TE
	Memory	32G DDR4	32G DDR4
	Storage	C drive: 128GB, mSATA SSD D drive: 512G SSD	C drive: 128GB, mSATA SSD D drive: 1TB SSD
	Power Supply Unit	230W adapter	
	I/O & Port	RJ45 x 2, VGA x 1, HDMI x 1, USB x 8, COM x 4	
	Certifications	EMC: CE/FCC Class A, CCC, BSMI Safety: CB/UL, CCC, BSMI	

## Ordering Information

Part Number	Description
IFS-RTM-M770L4A	MIC770/i5/32G/128&512G/Linux/Desk Pro for edge
IFS-RTM-M770L5A	MIC770/i7/32G/128&1T/Linux/Desk Pro for edge

## Optional Accessories

Part Number	Description
1702002600	Power cord, 3-pin, 10A 125V, 1.8M, UL type
1702031801	Power cord, 3-pin, 10A 250V, 1.8 M, UK type
1700018705	Power cord, 3-pin, 10A 250V, 1.8 M, EU type
1702002605	Power cord, ENEC 3-pin, 10A 250V, 1.8 M, EU type
AQD-SD4U16N24-SE	Optional DDR4-2400 Memory (16GB)

## Selection of Gateway Service

Solution Ready Package	Manufacturing Edge (M770-Windows)		
Part Number	IFS-RTM-M770W4A	IFS-RTM-M770W5A	
SRP Software	OS	Windows 10	
	Software	iFactory/RTM 2000 tags/s (suggested)	iFactory/RTM 4000 tags/s (suggested)
	Container Tech	Docker on Ubuntu	
	Database	InfluxDB Version 1.8 & Mongo version 4	
	Customized Graphic Platform	WISE-PaaS/Dashboard (dashboard edge lite plan with multi-language)	
	Browser	Supports HTML5 browser (recommend google chrome)	
SRP Hardware	Hardware Platform	MIC-770W-20A1	
	CPU	Intel Core 2.3G 12M, 6 core i5-10500TE	Intel Core 2.0G 16M, 8 core i7-10700TE
	Memory	32G DDR4	32G DDR4
	Storage	C drive: 128GB, mSATA SSD D drive: 512G SSD	C drive: 128GB, mSATA SSD D drive: 1TB SSD
	Power Supply Unit	230W adapter	
	I/O & Port	RJ45 x 2, VGA x 1, HDMI x 1, USB x 8, COM x 4	
	Certifications	EMC: CE/FCC Class A, CCC, BSMI Safety: CB/UL, CCC, BSMI	

## Ordering Information

Part Number	Description
IFS-RTM-M770W4A	MIC770/i5/32G/128&512G/Win10/Desk Pro for edge
IFS-RTM-M770W5A	MIC770/i7/32G/128&1T/Win10/Desk Pro for edge

## Optional Accessories

Part Number	Description
1702002600	Power cord, 3-pin, 10A 125V, 1.8M, UL type
1702031801	Power cord, 3-pin, 10A 250V, 1.8 M, UK type
1700018705	Power cord, 3-pin, 10A 250V, 1.8 M, EU type
1702002605	Power cord, ENEC 3-pin, 10A 250V, 1.8 M, EU type
AQD-SD4U16N24-SE	Optional DDR4-2400 Memory (16GB)

## Selection of Gateway Service

Solution Ready Package	Manufacturing Edge(M7700-Linux)			
Part Number	IFS-RTM-M7700L3A	IFS-RTM-M7700L4A	IFS-RTM-M7700L5A	
SRP	Operation System			
	AdvLinuxTU			
Software	Software	iFactory/RTM 1000 tag/5s (suggested)	iFactory/RTM 2000 tag/5s (suggested)	iFactory/RTM 4000 tag/5s (suggested)
	Container Tech	Docker on Ubuntu		
	Database	InfluxDB Version 1.8 & Mongo version 4		
	Customized Graphic Platform	WISE-PaaS/Dashboard (Dashboard Edge Lite plan with multi-language)		
	Browser	Supports HTML5 browser (recommend google chrome)		
SRP Hardware	Hardware Platform	MIC-7700Q		
	CPU	Intel Core 2.3G 6M 2Core i3-7101E	Intel Core 2.3G 6M, 4Core i5-7500TE	Intel Core 2.9G 8M, 4Core i7-7700T
	Memory	16G DDR4	16G DDR4	32G DDR4
	Storage	C drive: 128GB, mSATA SSD D drive: 128G SSD	C drive: 128GB, mSATA SSD D drive: 512G SSD	C drive: 128GB, mSATA SSD D drive: 1T SSD
	Power Supply Unit	150W adapter		
	I/O & Port	RJ45 x 2, VGA x 1, HDMI x 1, USB x 8, COM x 4		
	Certifications	CE / FCC / UL / CCC		

## Ordering Information

Part Number	Description
IFS-RTM-M7700L3A	MIC7700,i3,16G,128&128G,Linux,iFactory/RTM
IFS-RTM-M7700L4A	MIC7700,i5,16G,128&512G,Linux,iFactory/RTM
IFS-RTM-M7700L5A	MIC7700,i7,32G,128&1T,Linux,iFactory/RTM

## Optional Accessories

Part Number	Description
1702002600	Power cord, 3-pin, 10A 125V, 1.8M, UL type
1702031801	Power cord, 3-pin, 10A 250V, 1.8 M, UK type
1700018705	Power cord, 3-pin, 10A 250V, 1.8 M, EU type
1702002605	Power cord, ENEC 3-pin, 10A 250V, 1.8 M, EU type
AQD-SD4U16N24-SE	Optional DDR4-2400 Memory (16GB)

## Selection of Gateway Service

Solution Ready Package	Manufacturing Edge(M7700-Windows)			
Part Number	IFS-RTM-M7700W3A	IFS-RTM-M7700W4A	IFS-RTM-M7700W5A	
SRP	Operation System			
	Windows 10			
Software	Software	iFactory/RTM 1000 tag/5s (suggested)	iFactory/RTM 2000 tag/5s (suggested)	iFactory/RTM 4000 tag/5s (suggested)
	Container Tech	Docker on Ubuntu		
	Database	InfluxDB Version 1.8 & Mongo version 4		
	Customized Graphic Platform	WISE-PaaS/Dashboard (Dashboard Edge lite plan with multi-language)		
	Browser	Supports HTML5 browser (recommend google chrome)		
SRP Hardware	Hardware Platform	MIC-7700Q		
	CPU	Intel Core 2.3G 6M 2Core i3-7101E	Intel Core 2.3G 6M, 4 Core i5-7500TE	Intel Core 2.9G 8M, 4 Core i7-7700T
	Memory	16G DDR4	16G DDR4	32G DDR4
	Storage	C drive: 128GB, mSATA SSD D drive: 128G SSD	C drive: 128GB, mSATA SSD D drive: 512G SSD	C drive: 128GB, mSATA SSD D drive: 1T SSD
	Power Supply Unit	150W adapter		
	I/O & Port	RJ45 x 2, VGA x 1, HDMI x 1, USB x 8, COM x 4		
	Certifications	CE / FCC / UL / CCC		

## Ordering Information

Part Number	Description
IFS-RTM-M7700W3A	MIC7700,i3,16G,128&128G,Win10,iFactory/RTM
IFS-RTM-M7700W4A	MIC7700,i5,16G,128&512G,Win10,iFactory/RTM
IFS-RTM-M7700W5A	MIC7700,i7,32G,128&1T,Win10,iFactory/RTM

## Optional Accessories

Part Number	Description
1702002600	Power cord, 3-pin, 10A 125V, 1.8M, UL type
1702031801	Power cord, 3-pin, 10A 250V, 1.8 M, UK type
1700018705	Power cord, 3-pin, 10A 250V, 1.8 M, EU type
1702002605	Power cord, ENEC 3-pin, 10A 250V, 1.8 M, EU type
AQD-SD4U16N24-SE	Optional DDR4-2400 Memory (16GB)