



PAGU-FLEX

FLEXIBLE ISOLATING COUPLING

- High precision for positioning applications
- Without wear or fatigue
- Vibration absorption
- Good torsional elasticity

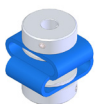


Adjuncts to a great variety of uses, the PAGU-FLEX couplings have been designed flexibly in accordance with the existing agreements for the shaft, as well as with the different requirements of the specific application cases. In the standard versions, each one of the galvanised heads (C15K material) has a cylindrical hole (H7 tolerance) and is fixed to the

shaft through a stay bolt with a hexagonal head DIN 916. The internal heads are very useful in situations with little space or reduced access.

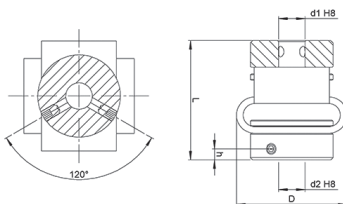
TECHNICAL SPECIFICATIONS

	Torque <i>Ncm</i>	Clamping torque <i>Ncm</i>	Max. Speed <i>rpm</i>	Admissible max. misalignment			Torsion spring stiffness <i>Nm/rad</i>	Radial spring stiffness <i>N/mm</i>	Weight <i>g</i>	Inertia <i>gcm²</i>
				Angular	Axial	Radial				
				<i>degree</i>	<i>mm</i>	<i>mm</i>				
GFP 10	0,5	100	3.000	±10	±2	±2	13	13	33	41
GFP 20	1,5	200	3.000	±10	±3	±2,5	25	15	48	104
GFP 30	5	300	3.000	±15	±5	±5	43	9	140	220

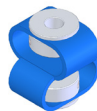


GFP 10

Ø d1/d2
06/06
08/08

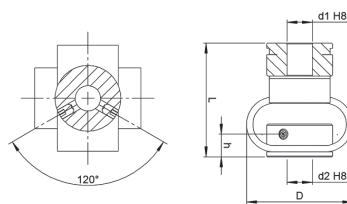


Ordering code example: GFP 10 06/06

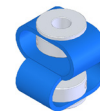


GFP 20

Ø d1/d2
10/10

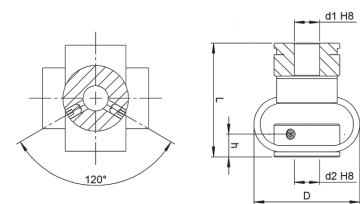


Ordering code example: GFP 20 10/10



GFP 30

Ø d1/d2
12/12
14/14



Ordering code example: GFP 30 12/12

	Symbol	10	20	30
Rotation diameter	D	29 ± 1	48 ± 1	58 ± 1
Length in the idle mode	L	29 ± 1,5	46 ± 2	52 ± 2
Height of the thread screw	h	2,5	9	11
Minimum diameter of the drill hole	d1/d2	4	8	10
Maximum permitted diameter of the standard drill hole	d1/d2	10	14	19
Hexagonal screw DIN 916		M3	M4	M5

Dimensions in mm

