



# SERIE 58S

INCREMENTAL SOLID SHAFT ENCODER FOR INDUSTRIAL APPLICATIONS

 SIN/COS

- Resolution 2.048 pulses per turn
- External diameter 58 mm
- Shaft  $\varnothing$  6 mm
- Fixation through synchro flange
- Protection class IP65 according to DIN EN 60529
- Connection by cable (other cable length available) or industrial connector M12 or M23



Optical Encoder

Incremental Encoder

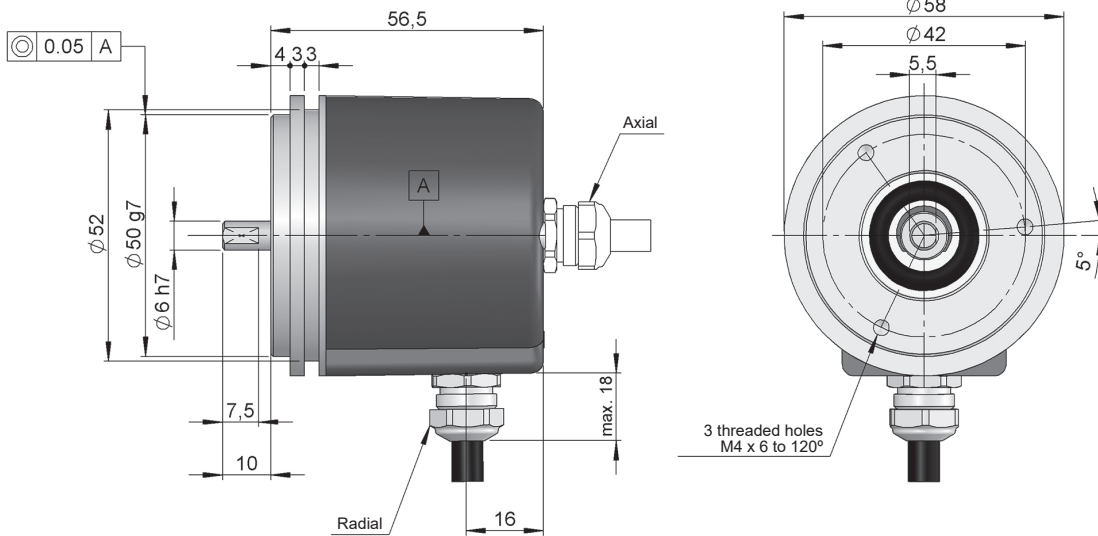
High shaft load capacity

Vibration and shock resistant

IP65

SIN/COS

Express Delivery



Drawing shaft type 1, connection type 1/2, without flange

## REFERENCE

Reference example: 58S-11127-2048

Serie	Shaft	Flange	Output signals	Connection	Power Supply / Electronic output	Pulses number	Special customer
58S -	<input type="checkbox"/>	<input type="checkbox"/>	<input type="checkbox"/>	<input type="checkbox"/>	<input type="checkbox"/> -	<input type="text" value="2048"/>	<input type="text" value=""/>
	1. $\varnothing$ 6x10 mm	1. None	1. A $\tilde{A}$ +B $\tilde{B}$ +0 $\tilde{0}$ 2. A $\tilde{A}$ +B $\tilde{B}$	1. Axial cable 2. Radial cable 3. Axial M23 12p CW 4. Radial M23 12p CCW 5. Axial M12 8p CCW 6. Radial M12 8p CCW	7. 5 VDC / SIN-COS 1Vpp 5 VDC		

Order your reference  
Step file 3D

[info@encoderhohner.com](mailto:info@encoderhohner.com)

service available in 24 h



# SERIE 58S

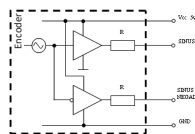
## INCREMENTAL SOLID SHAFT ENCODER FOR INDUSTRIAL APPLICATIONS

SIN/COS

### MECHANICAL SPECIFICATIONS

Materials	Cover: Aluminium Housing: Aluminium Shaft: Stainless Steel
Bearings	Ballraces
Bearings lifetime	1x10 <sup>10</sup> rev.
Maximum number of revolutions permitted mechanically	6000 rpm
Protection against dust and splashes according to DIN EN 60529	IP65
Rotor inertia moment	30 gcm <sup>2</sup>
Starting torque at 20°C (68°F)	≤ 0,02 Nm
Maximum load permitted on axial shaft	40 N
Maximum load permitted on radial shaft	60 N
Weight approx.	0,5 Kg
Operating temperature range	-20°C to +80°C
Vibration according to DIN EN 60068-2-6	100 m/s <sup>2</sup> (10Hz...2000Hz)
Shock according to DIN EN 60068-2-27	1000 m/s <sup>2</sup> (6ms)
Number of pulses per turn	2.048
Axial or radial connection	2 meters cable or industrial connector M12 or M23 (other cable lengths available on order) Female connector not included

### OUTPUT SIGNALS



<b>OUTPUT CIRCUIT</b>	<b>Sine-wave</b>
Reference code	7
Power supply	5 VDC ±10%
Output voltage	5 VDC
Consumption	Typical: 40 mA Max: 90 mA
Length of cable allowed	50 m
Signal type	SIN/COS, 1Vpp
Output signal level	0.6 to 1.2 Vpp
Signal offset	2.5 VDC
Reference	0.2 to 1 VDC
Frequency	200 kHz
Protection polarity inversion	Not permanent

Cosine leads (90° electric) Sine, view from the shaft, shaft rotating clockwise

# SERIE 58S

## INCREMENTAL SOLID SHAFT ENCODER FOR INDUSTRIAL APPLICATIONS

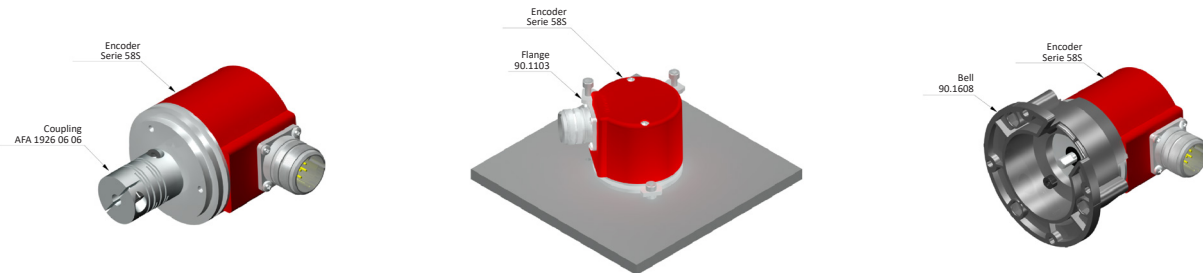
SIN/COS

### CONNECTION



	Cable 3x2x0,14+2x0,34 95.0008003	Connector M12 8p CCW	Connector M23 12p CW
GND	Black	1	1
VCC	Red	2	2
COS	Yellow	3	3
SIN	Green	4	4
$\overline{\text{COS}}$	Brown	5	5
$\overline{\text{SIN}}$	Blue	6	6
0 (reference)	Grey	7	7
$\tilde{0}$	Orange	8	8

### ACCESSORIES EXAMPLES



All the accessories available in the section "MOUNTING ACCESSORIES".

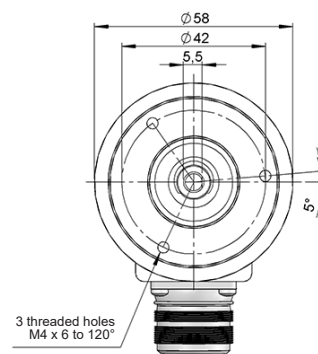
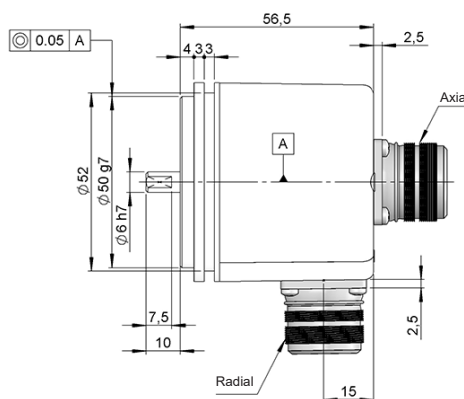
### CONNECTION DIMENSIONS

Female connector not included

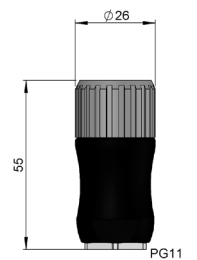
**Connection 3**  
Axial

**Connection 4**  
Radial

M23 12p  
male panel  
clockwise



**Female connector**  
95.0007131



# SERIE 58S

## INCREMENTAL SOLID SHAFT ENCODER FOR INDUSTRIAL APPLICATIONS

SIN/COS

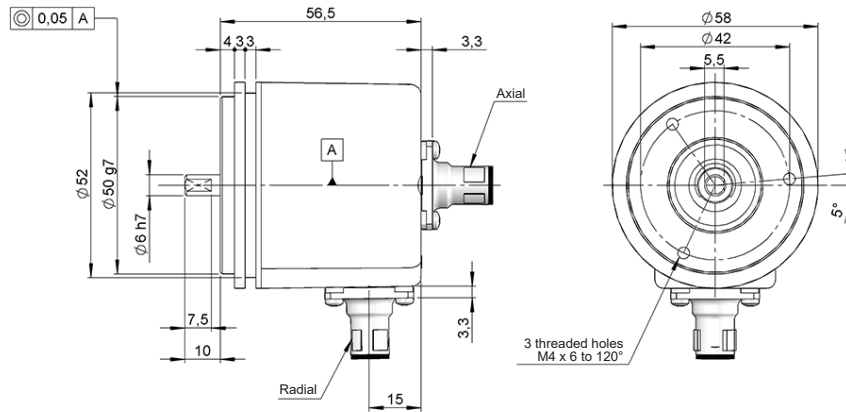
### Connection 5

Axial

### Connection 6

Radial

M12 8p  
male panel  
counter clockwise



### Female connector

95.0007152

