

LAMI-FLEX

FLEXIBLE SHEET COUPLINGS

- Suitable for high speed
- High flexibility
- No cinematic errors in transmission
- High torsional rigidity



The LAMI-FLEX couplings are based on the use of some flexible steel or plastic membranes that pivot on the coupling, thus proportioning it a very good flexibility. The characteristics of LAMI-FLEX result in a transmission of great precision movement.

They are suitable for high rotation speeds, such as robots, machinetools, turbines, dynamometers ...

TECHNICAL SPECIFICATIONS

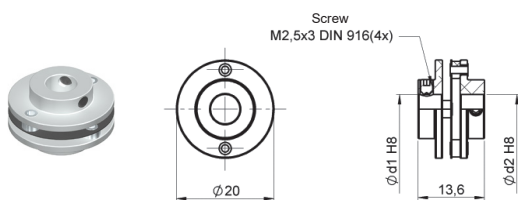
	Torque	Clamping torque	Max. Speed	Admissible max. misalignment			Torsion spring stiffness	Radial spring stiffness	Weight	Inertia	
	Ncm	Ncm		rpm	Angular	Axial					Radial
					degree	mm					mm
LFP 2014	50	60	10000	±2,5	±0,3	-	100	-	5	2,6	
LFP 2016	50	60	10000	±3	±0,4	±0,2	45	125	6	2,8	
LFA 2213	20	20	10000	±2	±0,3	±0,3	14	3	9,5	3,2	
LFA 2519	40	65	12000	±2,5	±0,4	±0,25	22	60	16	13,5	
LFA 2525	40	65	12000	±2,5	±0,4	±0,25	22	60	18	15	
LFA 3019	80	80	12000	±3	±0,4	±0,4	150	6	16	19	
LFA 3022	60	80	12000	±2,5	±0,4	±0,3	30	40	30	35	
LFA 3027	60	80	12000	±2,5	±0,4	±0,3	30	40	32	37	
LFA 3437	6,3	150	18000	2	±0,5	0,2	2500	100	75	130	
LFA 3832	400	60	8000	±2,5	±0,3	±0,3	250	220	53	82	
LFA 3850	400	60	8000	±2,5	±0,8	±0,8	250	12	63	106	
LFA 4447	15	350	14000	2	±0,6	0,25	6400	180	156	470	

LFP 2014

Ordering code example: LFP 2014 04/04

Ø d1/d2

02/02
02/04
04/04
06/06

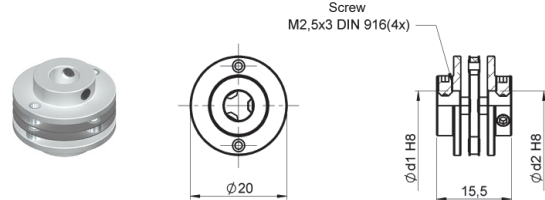


LFP 2016

Ordering code example: LFP 2016 02/04

Ø d1/d2

02/02
02/04
04/04
06/06



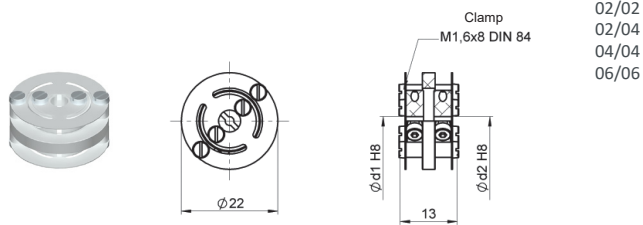
LAMI-FLEX

FLEXIBLE SHEET COUPLINGS

LFA 2213

Ordering code example: LFA 2213 04/04

Ø d1/d2

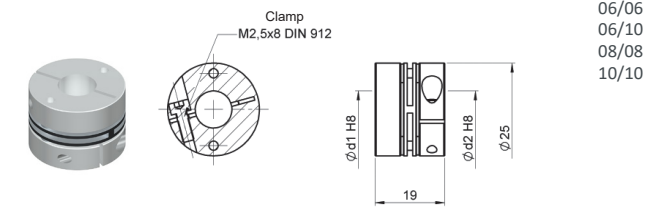


02/02
02/04
04/04
06/06

LFA 2519

Ordering code example: LFA 2519 06/06

Ø d1/d2

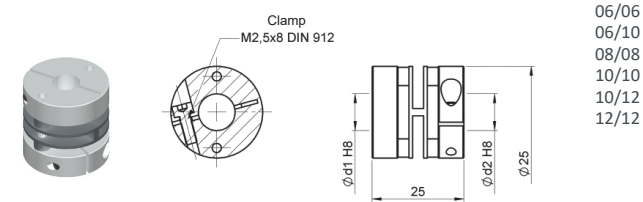


06/06
06/10
08/08
10/10

LFA 2525

Ordering code example: LFA 2525 06/06

Ø d1/d2

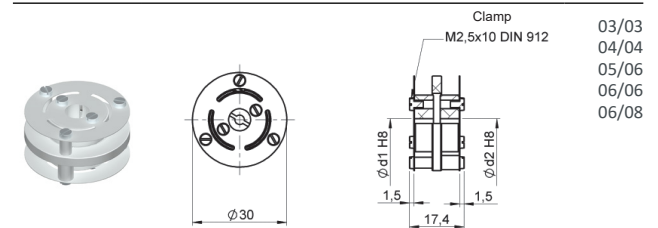


06/06
06/10
08/08
10/10
10/12
12/12

LFA 3019

Ordering code example: LFA 3019 06/08

Ø d1/d2

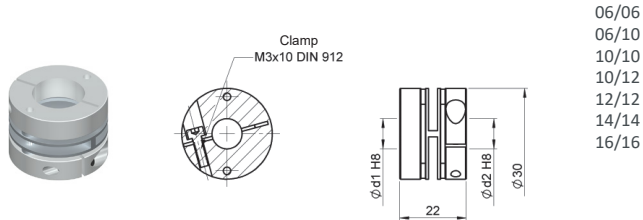


03/03
04/04
05/06
06/06
06/08

LFA 3022

Ordering code example: LFA 3022 10/10

Ø d1/d2

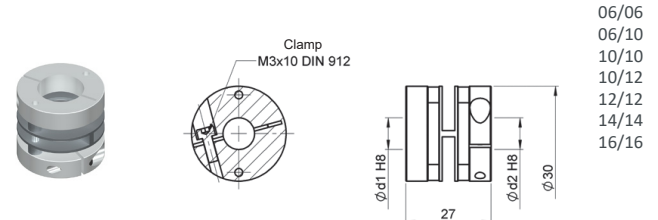


06/06
06/10
10/10
10/12
12/12
14/14
16/16

LFA 3027

Ordering code example: LFA 3027 12/12

Ø d1/d2

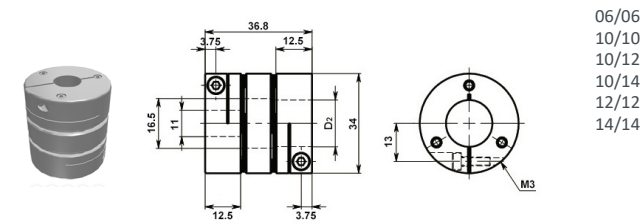


06/06
06/10
10/10
10/12
12/12
14/14
16/16

LFA 3437

Ordering code example: LFA 3437 11/11

Ø d1/d2

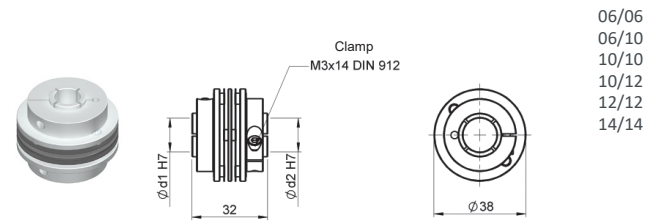


06/06
10/10
10/12
10/14
12/12
14/14

LFA 3832

Ordering code example: LFA 3832 06/06

Ø d1/d2

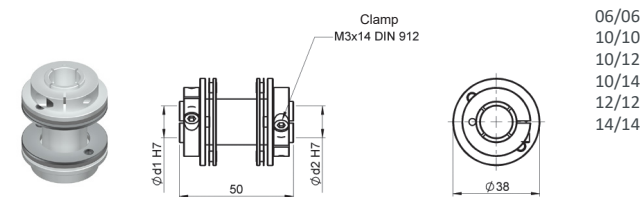


06/06
06/10
10/10
10/12
12/12
14/14

LFA 3850

Ordering code example: LFA 3850 06/06

Ø d1/d2

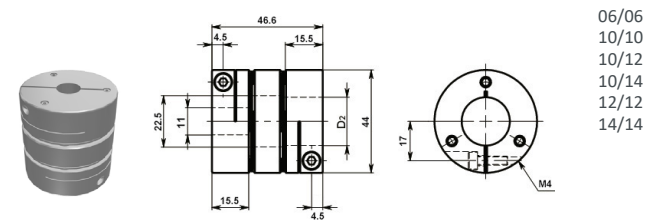


06/06
10/10
10/12
10/14
12/12
14/14

LFA 4447

Ordering code example: LFA 44470 11/11

Ø d1/d2



06/06
10/10
10/12
10/14
12/12
14/14