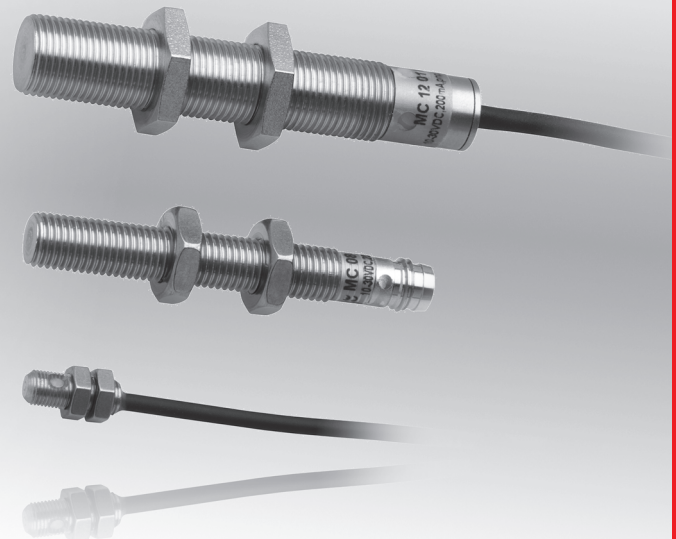
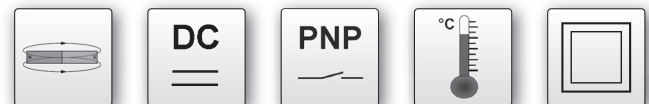


design	M5x0.5 M8x1 M12x1	
flush	sensing range	40mm



- ✓ stainless steel housing
- ✓ LED display
- ✓ integrated amplifier
- ✓ short-circuit and reverse polarity protection
- ✓ devices with thread to EURONORM
- ✓ high sampling frequency and sensing range
- ✓ connection with cable, M8- or M12-connector

**super small M5x0.5  
temperatures up to +130°C**



**description**

In control technology, these magnet sensors serve the task of non-contact and wear-free position recognition. They are used everywhere where inductive proximity switches reach the limits of their usefulness.

Compared with inductive sensors, they offer a significantly higher sensing range.

Even the smallest model, M5x0.5mm, has a 40mm sensing range on the magnet **AM000009**.

With the appropriate type of magnets, even greater sensing ranges can be achieved.

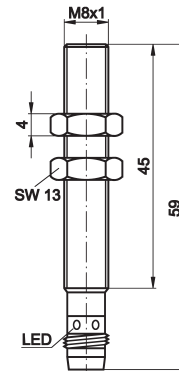
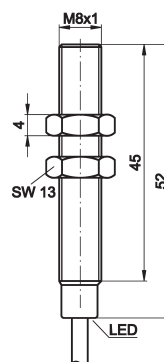
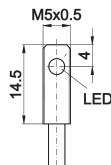
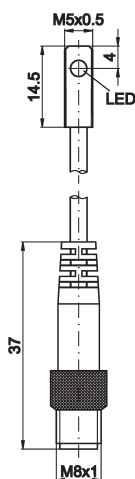
The object to be recognized has to be provided with a magnet, as it is only this that the sensors react to.

As magnet fields penetrate all non-magnetizable materials, the sensors can recognize magnets e.g. through non-ferrous metal walls, stainless steel walls, aluminium walls, plastic walls or wooden walls.

**application examples**

- ▶ position recognition from the exterior through stainless steel pipes
- ▶ speed inquiries in the case of rotating shafts
- ▶ position inquiries on chain guides
- ▶ inquiries concerning door positions

article-no.	MC050176	MC0501A6	MC080100	MC080170
connection	cable connector	cable	cable	M8-connector
temperature	-25 ... +70°C	-25 ... +70°C	-25 ... +70°C	-25 ... +70°C



### TECHNICAL DATA

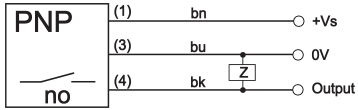
sensing range *	40mm	40mm	40mm	40mm
output signal	pnp, no	pnp, no	pnp, no	pnp, no
operating voltage	8 ... 30V DC	8 ... 30V DC	8 ... 30V DC	8 ... 30V DC
current consumption (w/o load)	≤ 20mA	≤ 20mA	≤ 20mA	≤ 20mA
output current (max. load)	200mA	200mA	200mA	200mA
voltage drop (max. load)	2.0V DC	2.0V DC	2.0V DC	2.0V DC
hysteresis (Sn)	5 ... 15%	5 ... 15%	5 ... 15%	5 ... 15%
real sensing range Sr	Sn ±10%	Sn ±10%	Sn ±10%	Sn ±10%
sampling frequency	1kHz	1kHz	1kHz	1kHz
status display	yellow LED	yellow LED	yellow LED	yellow LED
short-circuit protection	+	+	+	+
reverse polarity protection	+	+	+	+
housing material	stainless steel	stainless steel	stainless steel	stainless steel
design	M5x0.5	M5x0.5	M8x1	M8x1
operating temperature	-25 ... +70°C	-25 ... +70°C	-25 ... +70°C	-25 ... +70°C
system of protection (EN 60529)	IP67	IP67	IP67	IP67
connection	M8-cable connector, 3-pin	cable, 2m, PUR	cable, 2m, PUR	M8-connector, 3-pin
connection accessories	e.g. <b>VK200075</b> , 2m, straight, PUR	-	-	e.g. <b>VK200075</b> , 2m, straight, PUR
mounting accessories	<b>AY000045</b>	<b>AY000045</b>	<b>AY000047</b>	<b>AY000047</b>

\* referring to the magnet  
**AM000009**

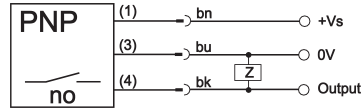
article-no.	MC120100	MC120120	MC120155
connection	cable	M12-connector	cable
temperature	-25 ... +70°C	-25 ... +70°C	-25 ... +130°C
<b>TECHNICAL DATA</b>			
sensing range *	40mm	40mm	40mm
output signal	pnp, no	pnp, no	pnp, no
operating voltage	8 ... 30V DC	8 ... 30V DC	8 ... 30V DC
current consumption (w/o load)	≤ 20mA	≤ 20mA	≤ 20mA
output current (max. load)	200mA	200mA	100mA
voltage drop (max. load)	2.0V DC	2.0V DC	2.0V DC
hysteresis (Sn)	5 ... 15%	5 ... 15%	5 ... 15%
real sensing range Sr	Sn ±10%	Sn ±10%	Sn ±10%
sampling frequency	1kHz	1kHz	1kHz
status display	yellow LED	yellow LED	yellow LED
short-circuit protection	+	+	+
reverse polarity protection	+	+	+
housing material	stainless steel	stainless steel	stainless steel
design	M12x1	M12x1	M12x1
operating temperature	-25 ... +70°C	-25 ... +70°C	-25 ... +130°C
system of protection (EN 60529)	IP67	IP67	IP67
connection	cable, 2m, PUR	M12-connector, 3-pin	cable, 2m, silicone
connection accessories	-	e.g. <b>VK200025</b> , 2m, straight, PUR	-
mounting accessories	<b>AY000049</b>	<b>AY000049</b>	<b>AY000049</b>
* referring to the magnet	<b>AM000009</b>		

### connection

cable device M5, M8, M12



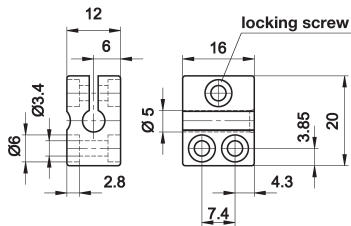
connector device M5, M8, M12



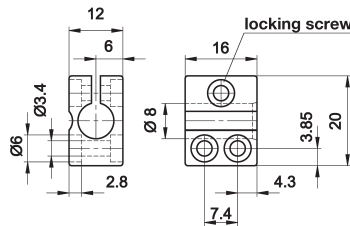
wire colors: bn = brown (1), bu = blue (3), bk = black (4)

### quick clips

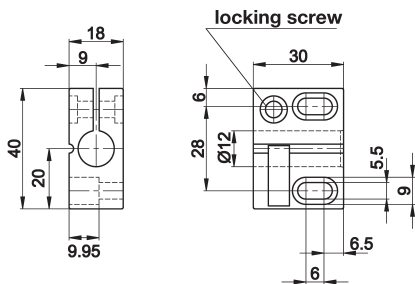
AY000045



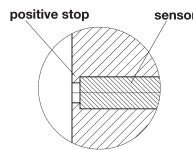
AY000047



AY000049



### quick clips with positive stop



ARTICLE-NO.	DESCRIPTION	DESIGN	NOTES
AY000045	quick clip	Ø5mm	PA6 / galvanized steel screws
AY000047	quick clip	Ø8mm	PA6 / galvanized steel screws
AY000048	quick clip with positive stop	Ø8mm	PA6 / galvanized steel screws
AY000049	quick clip	Ø12mm	PA6 / galvanized steel screws
AY000050	quick clip with positive stop	Ø12mm	PA6 / galvanized steel screws
AM000001	accessories, magnet, bariumferrite	Ø20mm / length 6.5mm	bore 4.3mm
AM000002	accessories, magnet, bariumferrite	Ø30mm / length 15mm	bore 5.6mm
AM000009	accessories, magnet, bariumferrite	Ø30mm / length 10mm	can be fastened with adhesive
AM000010	accessories, magnet, plastic jacket	Ø35mm / length 17mm	bore 5.6mm
AM000020	accessories, magnet, neodelta	Ø10mm / length 3mm	can be fastened with adhesive

This data sheet contains the standard versions only. Kindly request the availability of other output- and connection functions.

We will be pleased to supply the matching cable socket for your devices with connector. Please refer to the list in catalog chapter "accessories" under "cable sockets ipf-SENSORFLEX®" or search our website for "VK".

**Warning:** Never use these devices in applications where the safety of a person depends on their functionality.