



Andon I.App Solution Introduction

Advantech Industrial IoT / AI/
iFactory Smart Manufacturing Solution



Outline

1. Product Introduction

Overview

User Benefits

2. Product Key Features

3. User Story

4. Software Architecture

5. Pricing Details

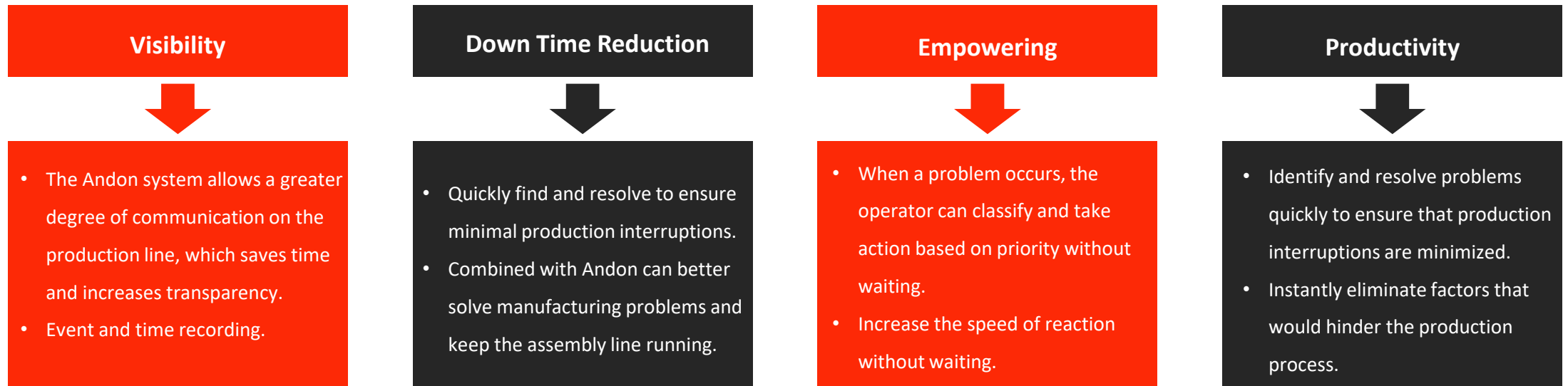


Overview

In the event of abnormal machine failures, material shortages, security issues, and interruption of production, an operator can simply click a button on the TPC screen or mobile phone which sends out alerts.

Once Andon receives an abnormal message, it can automatically or manually dispatch a maintenance request to the relevant personnel. Web-based software application, relevant personnel can use any Internet-connected device, tablet computer, notebook computer, iPad, anytime, anywhere through the browser to send maintenance requests to the relevant personnel in real time, and the relevant personnel can also receive the maintenance work order immediately. Repair, and quickly report the repair progress, and record the repair process.

The factory can use the maintenance history collected by Andon as data for product iteration, preventative maintenance and other analysis, so that post-event remediation can be advanced to pre-event prevention, reducing downtimes and improving revenues and productivity.





User Benefits

- **Quick Response**

A visual dashboard can be better understood by reducing time involved in finding information about a shutdown of a production line.

- **Better Control**

By predicting problems, Andon enables maintenance teams and managers to better control the production line. A real-time dashboard and Andon service interface can effectively reduce the communication cost between operators and supervisors

- **Data Collection**

To develop and maintain an effective management system, information about production line functions must go from the lowest level of the organization to the decision-making top. This way, managers will have better visibility and be able to improve of all aspects of the production line.



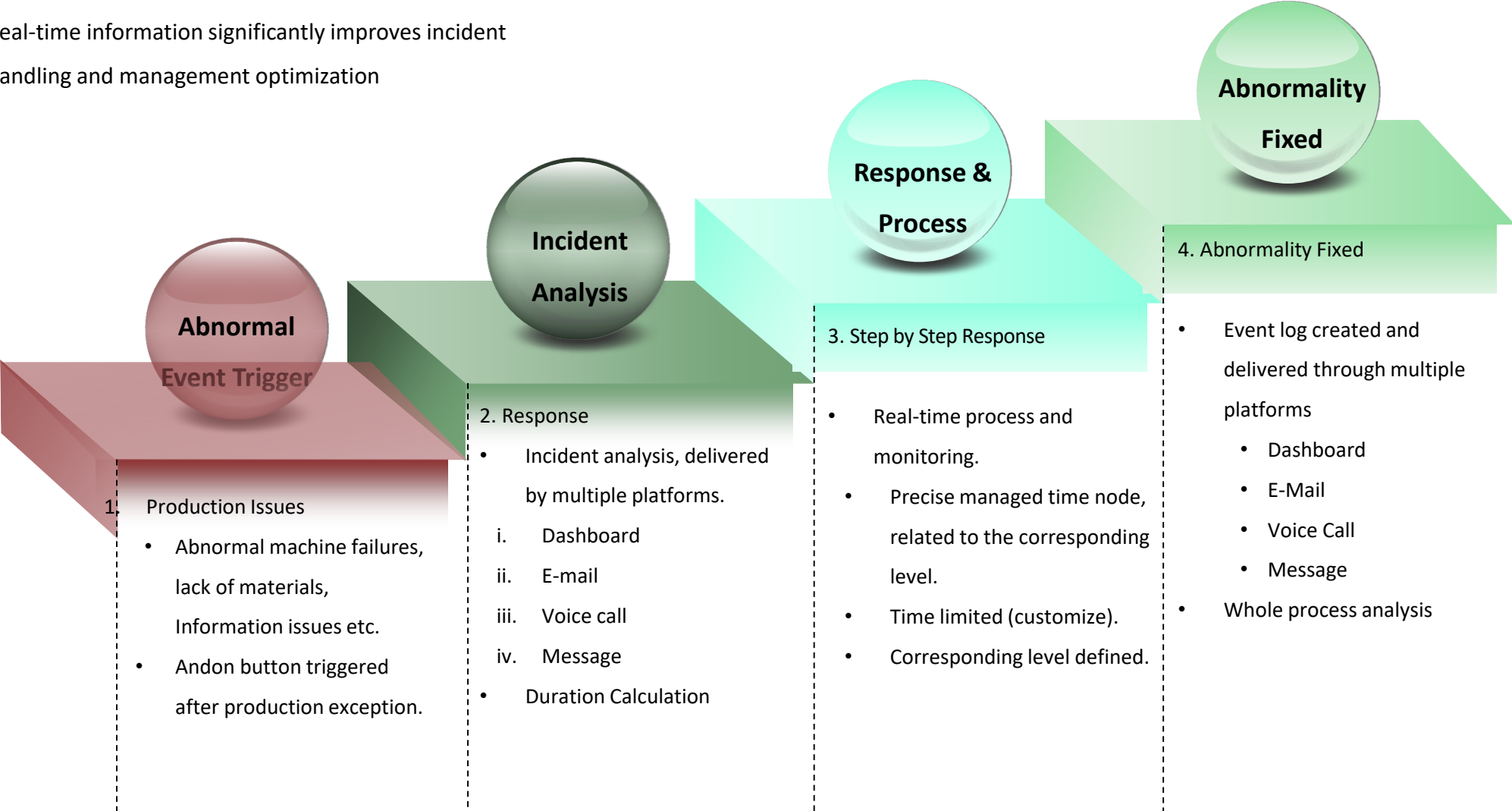
Abnormal Handling Process

Andon Visualization Management

Real-time information significantly improves incident handling and management optimization



Reduce Abnormal Events





Anomaly Overview Dashboard

Anomaly Overview Dashboard shows real-time anomaly status of production lines and stations and allows maintenance teams and management to have more control over improvements on the production line.

iFactory/Andon
2021/06/09 09:26:08
POWERED BY WISE-PaaS

1 Real Time

1-1 Monitoring Center

2 History Analysis

2-1 Failure Metric

2-2 Event Work Order Overview

Monitoring Center Last 6 hours

Group: DemoGroup

Event Status				New Event		Principal Overview			
New	Assigned	In Progress	Overdue	Station_01	Station_02	IFPSDM4	IFPSDM1	IFPSDM3	Total
1	5	5	4	3.8 week	3.9 week	3	3	2	12
Total: 15									

Real-time Event			Overdue Event			Today Event	
Total	Location	Lasting Time	devan-0526-01	devan-0526-01	Station_02		
	Station_01	3.8 week	21.4 hour	21.4 hour	3.9 week		
	Station_12	3.8 week					
	Station_01	3.8 week					
					Total: 4		

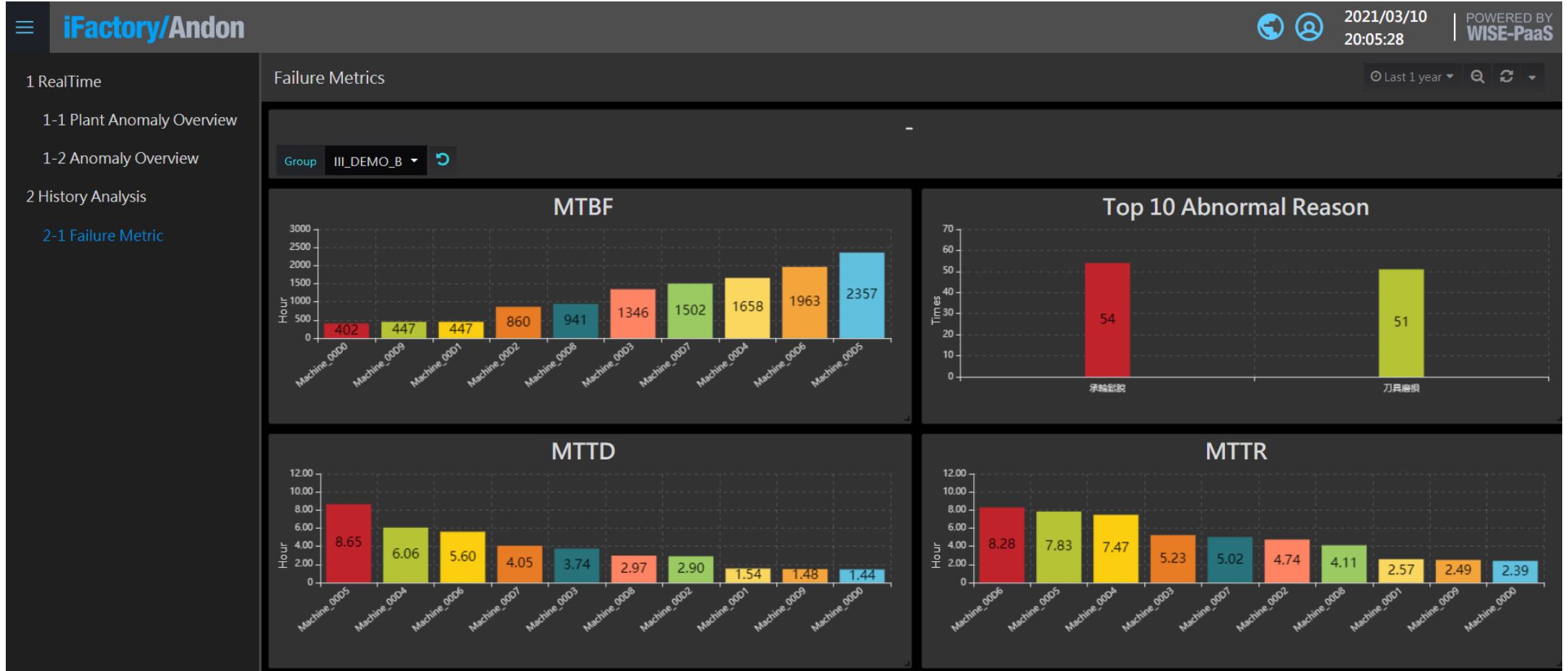
Factory Map

Events										
Event Name	Event Type	Location	TPC	Status	Principal	Lasting Time	Create Time	Plan Repair Time	Repair Time	Complete Time
Call Supervisor	Manual	-	devan-0526-01	Overdue	Devan	21 hour	2021-06-08 11:52	2021-06-08 18:00	-	-
Call Supervisor	Manual	-	devan-0526-01	Overdue	Devan	21 hour	2021-06-08 11:52	2021-06-08 18:00	-	-
Call Help	Manual	Station_12	-	In Progress	IFPSDM4	4 week	2021-05-13 18:45	2022-05-13 18:45	2021-05-13 21:45	-
Call Help	Manual	Station_12	-	In Progress	IFPSDM1	4 week	2021-05-13 18:45	2022-05-13 18:45	2021-05-13 21:45	-



Failure Metric Tracking

By tracking and analyzing failure metrics, including MTBF/MTTR/MTTD ratios and abnormal root causes, managers can reduce downtimes.





Abnormal Event Record

Field status layout shows real-time status of machines and stations, which helps users identify problems accurately to resolve issues and further improve processes.

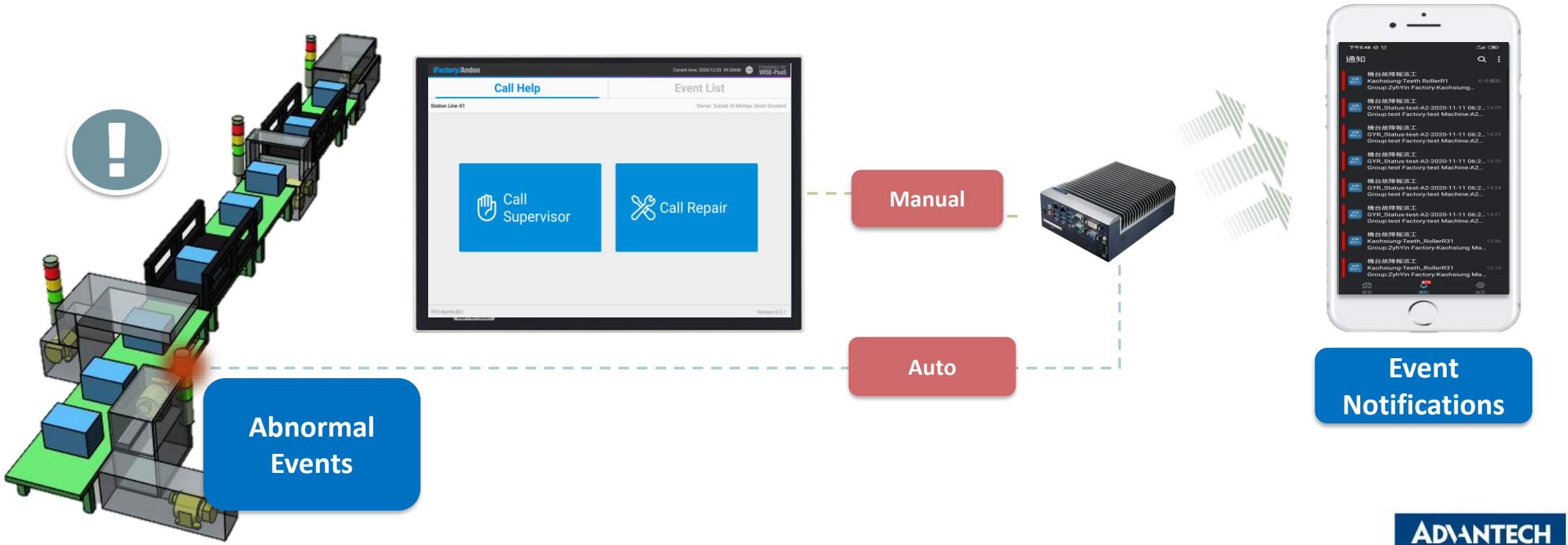
Event Name	Mode	Location	Repairer	Status	Time Created	Detection Time	Repair Started Time	Resolve Time	Completed Time	Elapsed Time
Event02	Manual	-	-	Cancel	2022-01-25 09:35	-	-	-	2022-01-25 09:36	42.4 s
Event01	Manual	-	-	Overdue	2022-03-24 17:59	-	-	-	-	2.7 week
Event02	Manual	-	-	Overdue	2022-03-24 17:58	-	-	-	-	2.7 week
Event01	Manual	-	Test_User	Overdue	2022-02-16 18:17	-	-	-	-	7.8 week
Event01	Manual	-	-	Overdue	2022-01-25 14:44	-	-	-	-	11.0 week
Event02	Manual	-	-	Overdue	2022-01-25 14:42	48.6 s	2022-01-25 14:43	-	-	11.0 week
Event02	Manual	-	-	Overdue	2022-01-24 18:20	-	-	-	-	11.1 week



Abnormal Event Alarm

Integrates with iMobile alarm service, both manual and automatic call-outs are available :

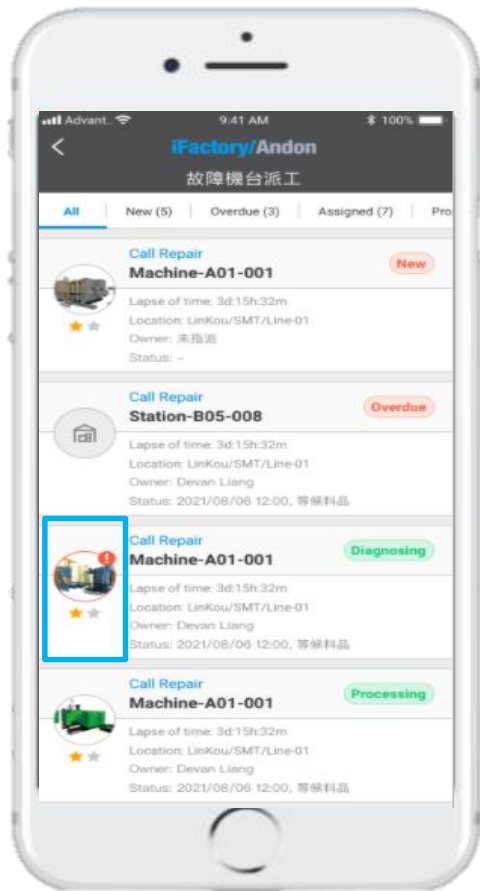
- Manual: operators use TPC
- Automatic notifications when abnormal events occur



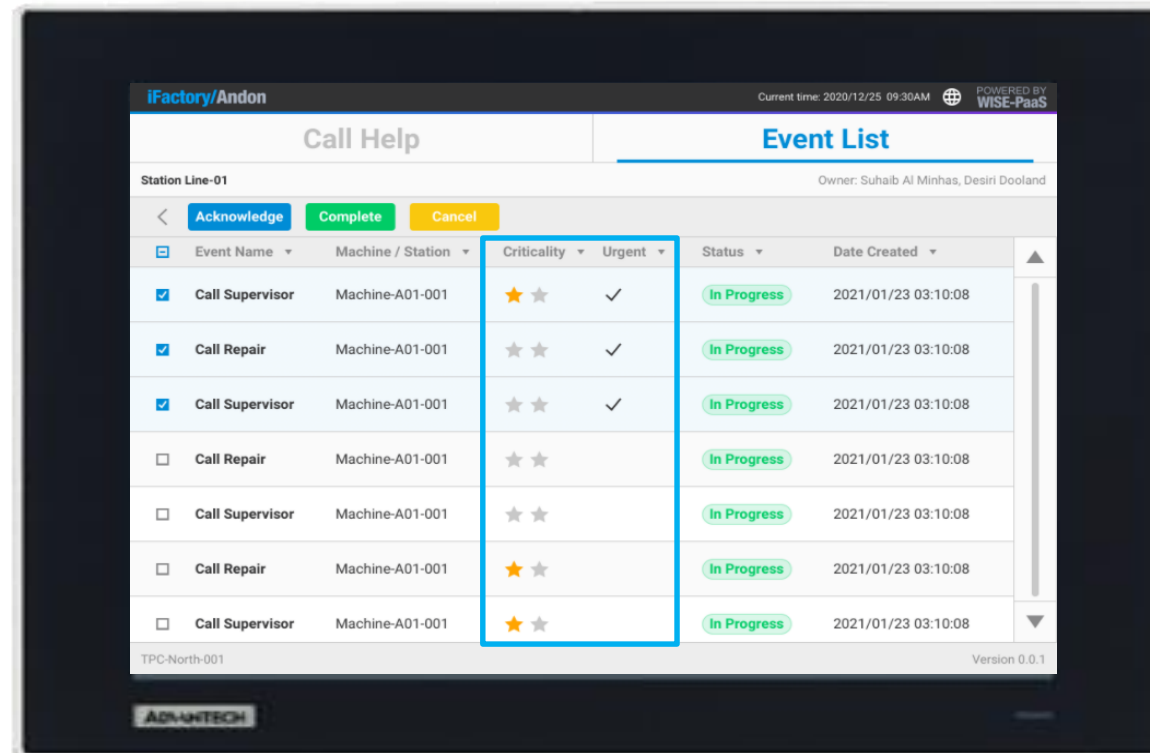


Abnormal Events - Job Dispatch & Report

iMobile service supports manual and automatic job dispatch, which reduces time wasted finding and transferring information.



Highlights critical & urgent events.



Users can also report events on touch panels from the shop floor.

iMobile Abnormal Job Dispatch/ Report

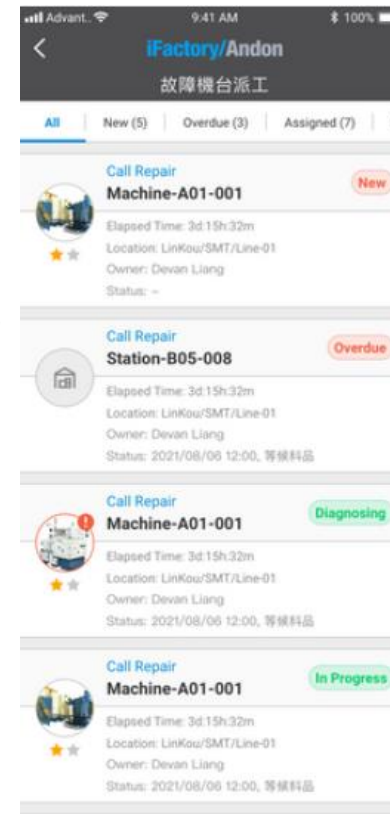
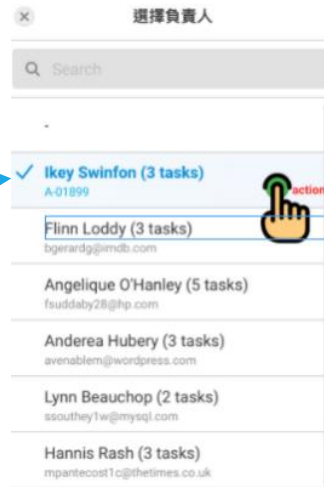
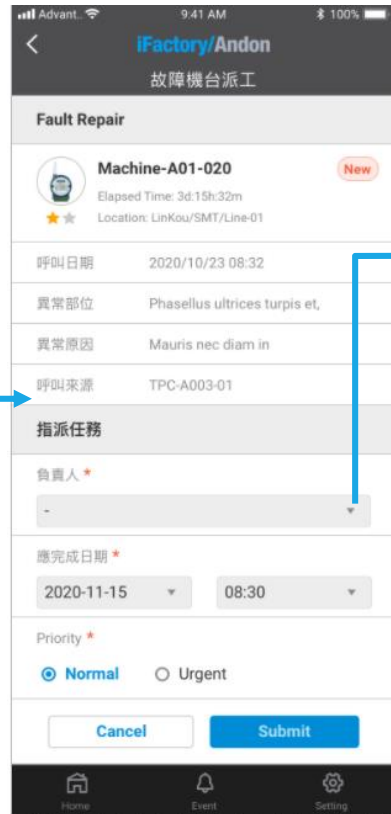
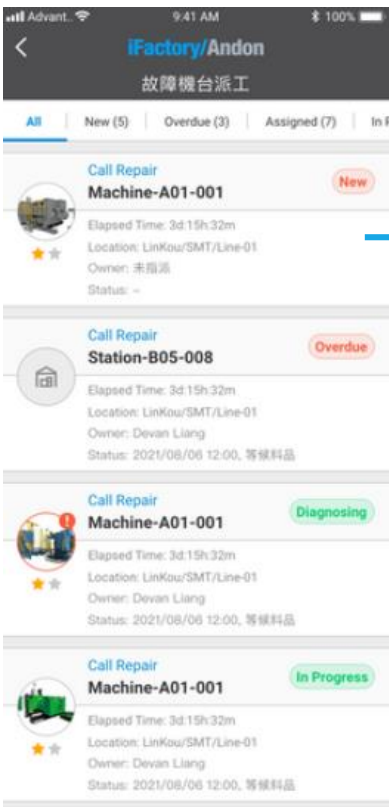
Touch Panel Event List



Job Dispatch & Report Flow

After setting up, supervisors can assign tasks for abnormal events to team members directly with real-time notifications.

Visual or sound displays promotes a better flow of internal communication between the various operators.



Job Dispatch by iMobile

Job Report by iMobile



Event Settings – Event List

Event settings provides a user-defined platform which includes notifications, processing flow modifications, and additional response information configuration, which makes the Andon service more flexible and able to fulfill different usage scenarios.

Index	Event Name	Description	Call Out Parameter	Dispatch Parameter	Report Parameter	Dispatch Mode	Notification Group	Actions
1	Event-001	-	2	2	2	System Auto	Team-001	
2	Event-002	-	3	5	5	System Auto	Team-002	
3	Event-003	-	2	3	3	System Auto	Team-003	
4	Event-004	Event-Q5805805478	3	4	4	System Auto	Team-004	
5	Event-005	Event-G5480027125	6	4	4	Manual	Team-005	
6	Event-006	Event-N1584804887	1	2	2	Manual	Team-006	

Event Settings – Event Lists

Edit Event
* Required

Dashboard Display Language(s)
English

Event Name
Call Supervisor

Description
Description

Dispatch Mode*
 Manual System Auto

Notification Group*
SupportTeam

Tips: To change your dashboard display language(s), click System settings > Advanced Settings > Display Language Settings.

CANCEL SUBMIT

User modified event notifications and processing work flows.

Call Repair

選擇設備(0) 1 - 12 of 12

故障位置(0) 1 - 5 of 5

Station_01 Station_02 Station_03 Station_04 Station_05 Station_06 Station_07

維修位置
維修位置
維修位置
維修位置
維修位置

CANCEL SUBMIT

Touch Panel – Calls Help

Fault Report

Machine-A01-020

Operator: Joe Joe Joe

Location: Location(SMT)Line01

發生日期: 2020/11/16 08:02

異常部位: PhaseA-UVIUVI-TopRight-01

異常原因: Machine not start in

呼叫來源: TPC-A003-01

回報任務

預計完成日期: 2020-11-15 08:30

Status: In Progress Completed Cancel

選擇機台: Error-A01-0072

異常部位: 電機

異常原因: 維修狀態

解決方式: 更換故障機件

iMobile – Job Dispatch/Report

Additional event response information settings.





Event Settings – Display Setting

Event Settings also offers call-help service layout and button displays for user-defined functions. Users can adjust buttons and text colors as well as attach event icons to better illustrate events for other users.

Set up event buttons & text colors to attach to event icons.

Index	Event Name	Button Color	Text Color	Actions
1	Call Supervisor	#190006	#FFFFFF	
2	Call Repair	#008CD6	#FFFFFF	
3	Alarm			
4	Error	#cc325b	#FFFFFF	
5	Lack of material	#009a9c	#FFFFFF	

Event button display layout modify.

Edit Display Setting
* Required

Display Name: Alarm

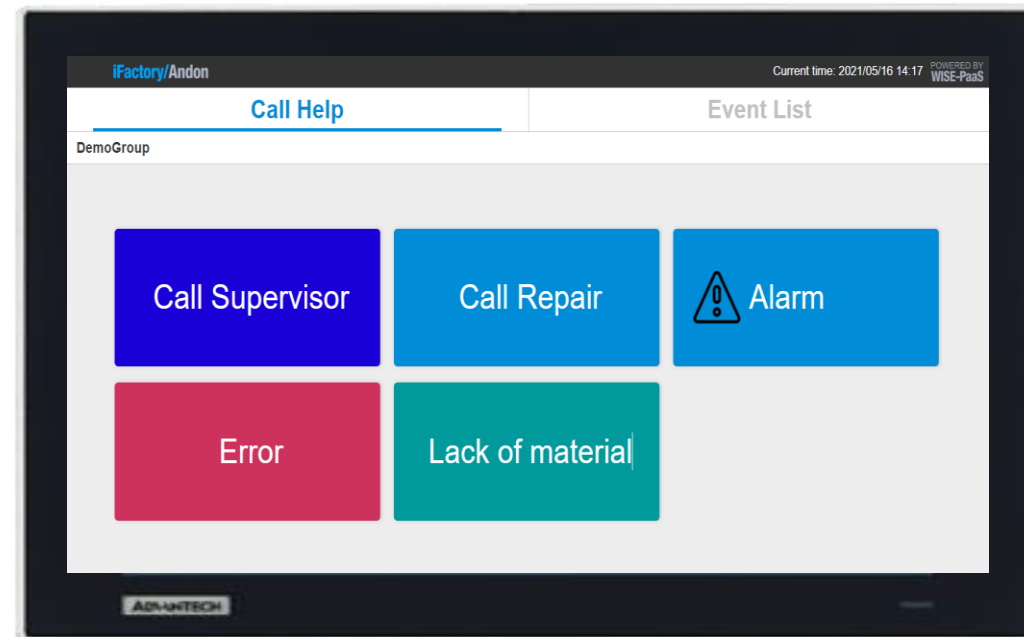
Image URL: alarm.png

Button Color: Button Color

Text Color: Text Color

Display Preview: Alarm

CANCEL SUBMIT



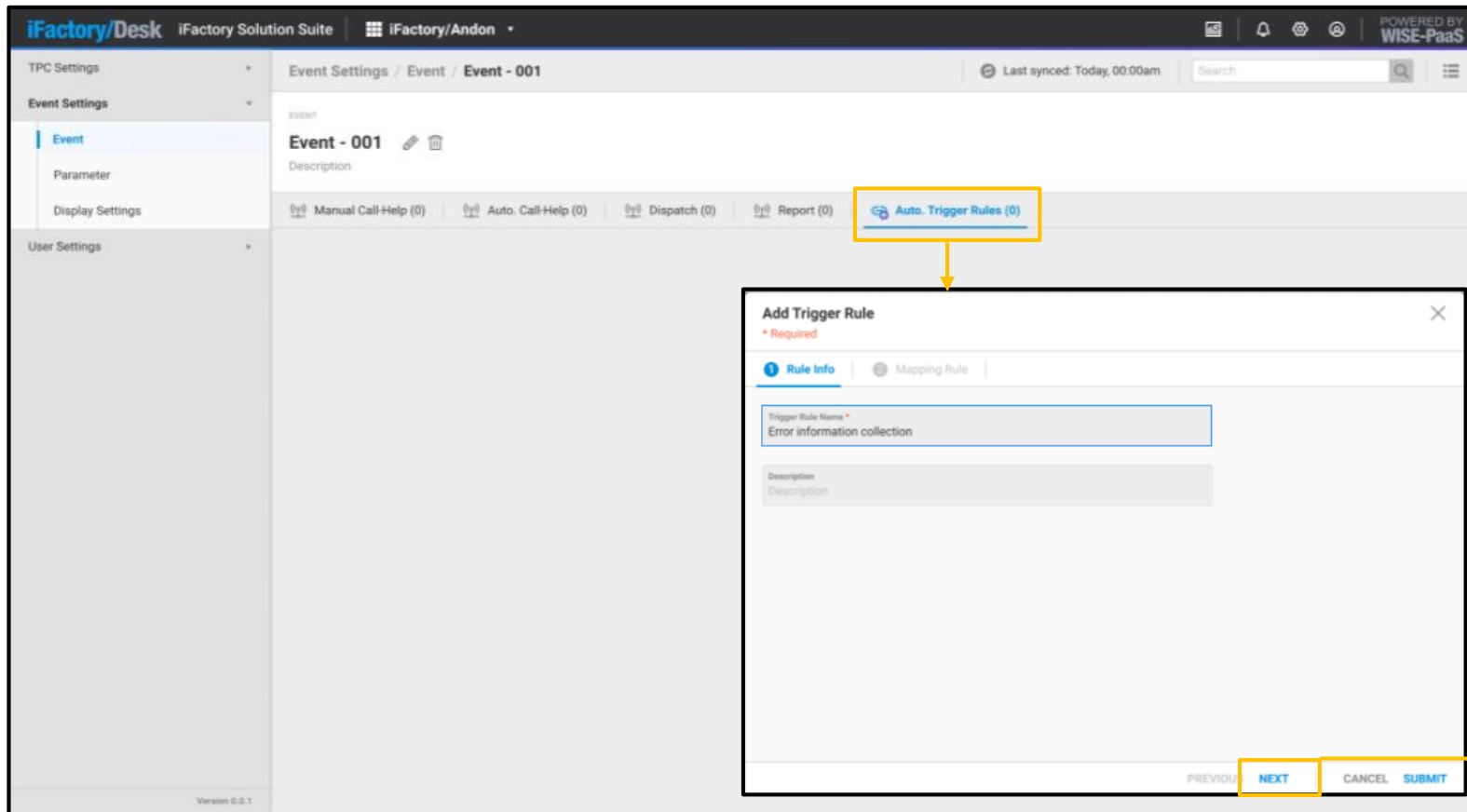
Display Settings

Touch Panel Call-Help

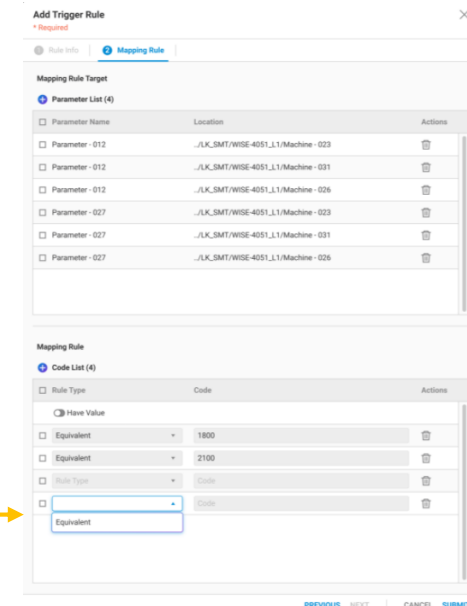


Automatically Trigger Event Settings

In addition to manually generating repair tasks, the event console for data acquisition machines also provides an automatic event trigger function. Users can trigger different events based on the parameters of different collected data through a simple configuration which also reduces the time from abnormal occurrence to notification.



Create trigger rules & set up machine parameters.



Setting Auto. Trigger Rule



Task Data Acquisition from Desk

Besides manually entering task information by the user, information can also be obtained through the iFactory/ RTM app or from third-party systems, such as machine orders or shipment information from ERP, etc.

TPC Settings
Event Settings
Event
Parameter
Display Settings
User Settings

Event Settings / Parameter / Automatic Parameter
Last synced: Today, 00:00am
Search
1-6 of 6
Rows per page 100

Index	Parameter Name	Description	Apply Event	Date Modified	Date Created	Actions
1	Machines	Description	2	2021/01/06 00:00:00	2021/01/06 00:00:00	
2	Stations	Description	5	2021/01/06 00:00:00	2021/01/06 00:00:00	
3	Users	Description				
4	Parameter-009	Description				
5	Parameter-008	Description				
6	Error information collection	Description				

Add Automatic Parameter Item
* Required

1 Parameter Info | Mapping Rule

Automatic Parameter Name *
Error information collection

Description
Description

Trigger Rule has been added

PREVIOUS NEXT CANCEL SUBMIT

Create RMS automatic parameters and associate those with RTM parameters.

Add Automatic Parameter Item
* Required

Parameter Info | Mapping Rule

Mapping Rule Target

Parameter (4)

Parameter Name	Location	Actions
Parameter -012	..LK_SMT/WISE-4051_L1/..Machine -023	
Parameter -012	..LK_SMT/WISE-4051_L1/..Machine -031	
Parameter -012	..LK_SMT/WISE-4051_L1/..Machine -026	
Parameter -027	..LK_SMT/WISE-4051_L1/..Machine -023	
Parameter -027	..LK_SMT/WISE-4051_L1/..Machine -031	
Parameter -027	..LK_SMT/WISE-4051_L1/..Machine -026	

Mapping Rule

Dashboard Display Language(s)

English (Default)

French
简体中文
繁體中文
日本語
한국어

Code List (5)

Value	Message	Actions
1100	Overheated	
1800	Paper Jam	
2100	Disconnected	
Code	Message	
Code	Message	

PREVIOUS NEXT CANCEL SUBMIT

Setting Auto. Acquisition Parameter



Research
Innovation Speed
Reliability

THINK OUTSIDE THE BOX

DEVELOPMENT

Location:
Taiwan

Company:
Tien Kang Co., Ltd



Overview:

Tien Kang Co., Ltd was founded in 1982, mainly engaged in high-tech footwear machinery and equipment. Base of shoe production, and has been developing shoe machinery equipment in the direction of "independent development" over the years.

Challenges / Requirements:

- Humanized operation interface - Graphical operation and display are convenient for general assembly operators and management supervisors to use.
- Improve event processing efficiency - Combining with ERP to replace paper forms and manual labors' time-consuming of reporting.
- Data Digitization - Digitize each work report data for follow-up statistics.

Solution :

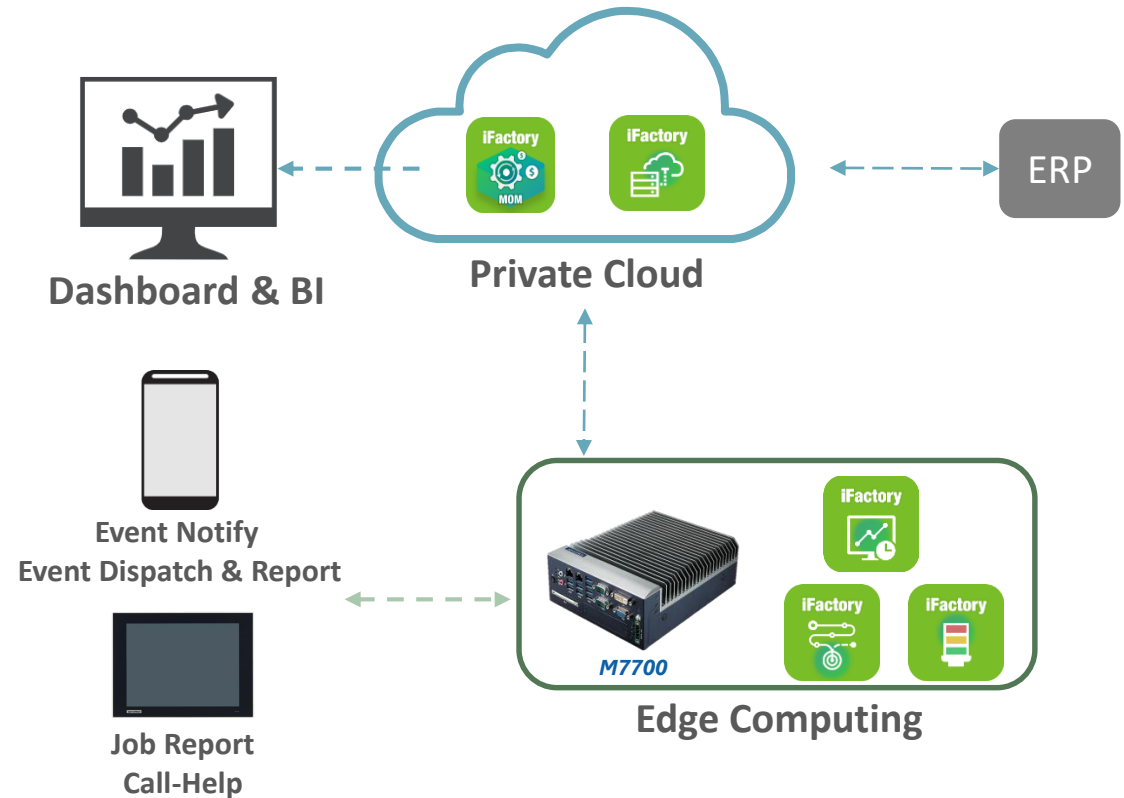
I.App Andon provides service with touch panel interface on production site. Once abnormal event occurred, all relevant personnel immediately been noticed and could start processing.

I.App Shop Floor collects defective output by operator reporting and connect ERP through Data Fabric to issue manufacturing quality abnormal order.

Benefits:

- In an integrated ERP, managers can shape each component of the business process tightly to ensure optimal implementation from the start.
- Enhance data value in use; Statistical analysis of data to improve factory operation efficiency.

System Diagram





Location:
Taiwan

Company:
Advantech Co., Ltd.



Overview:

Advantech Co., Ltd. is one of the leading electronic manufacturers in Taiwan, well-known for the supply of various industrial automation control products and parts, many assembly product lines are to built in the plant to fulfill such types of production to meet specialized customer demands.

Challenges / Requirements:

- The assembly lines needed to shift lines and schedule work orders flexibly to meet their production targets, therefore, production process interruptions sometimes happen, which result in unplanned downtime of machines.
- To figure out the interconnection between machines and assign manpower to different tasks to improve abnormal event management

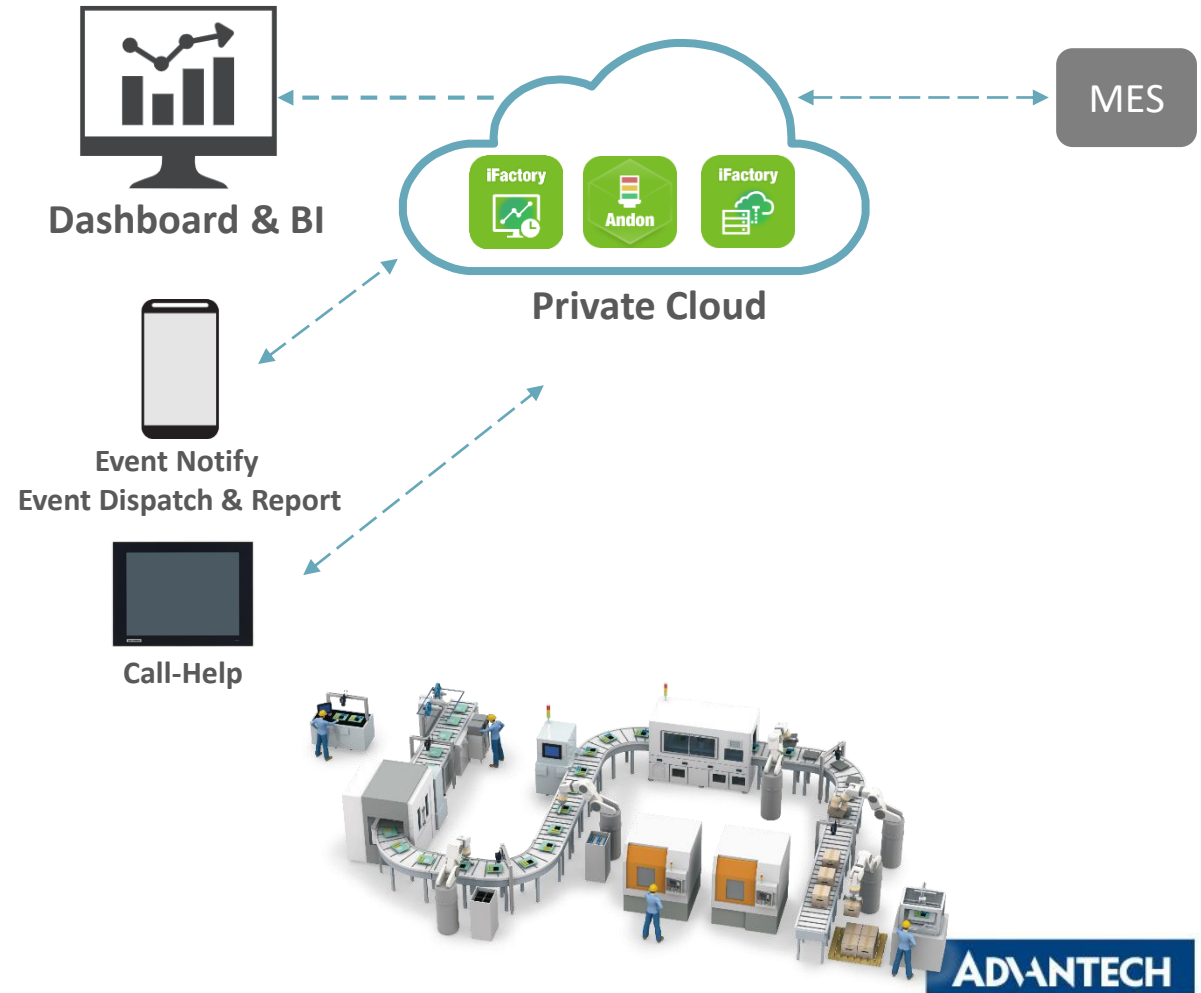
Solution :

I.App Andon service to reduce downtime on the assembly lines at the factory. Solution suits were applied to the on premise networks to meet plant information safety rules. Event alarms and notifications were developed on different devices for relevant workers.

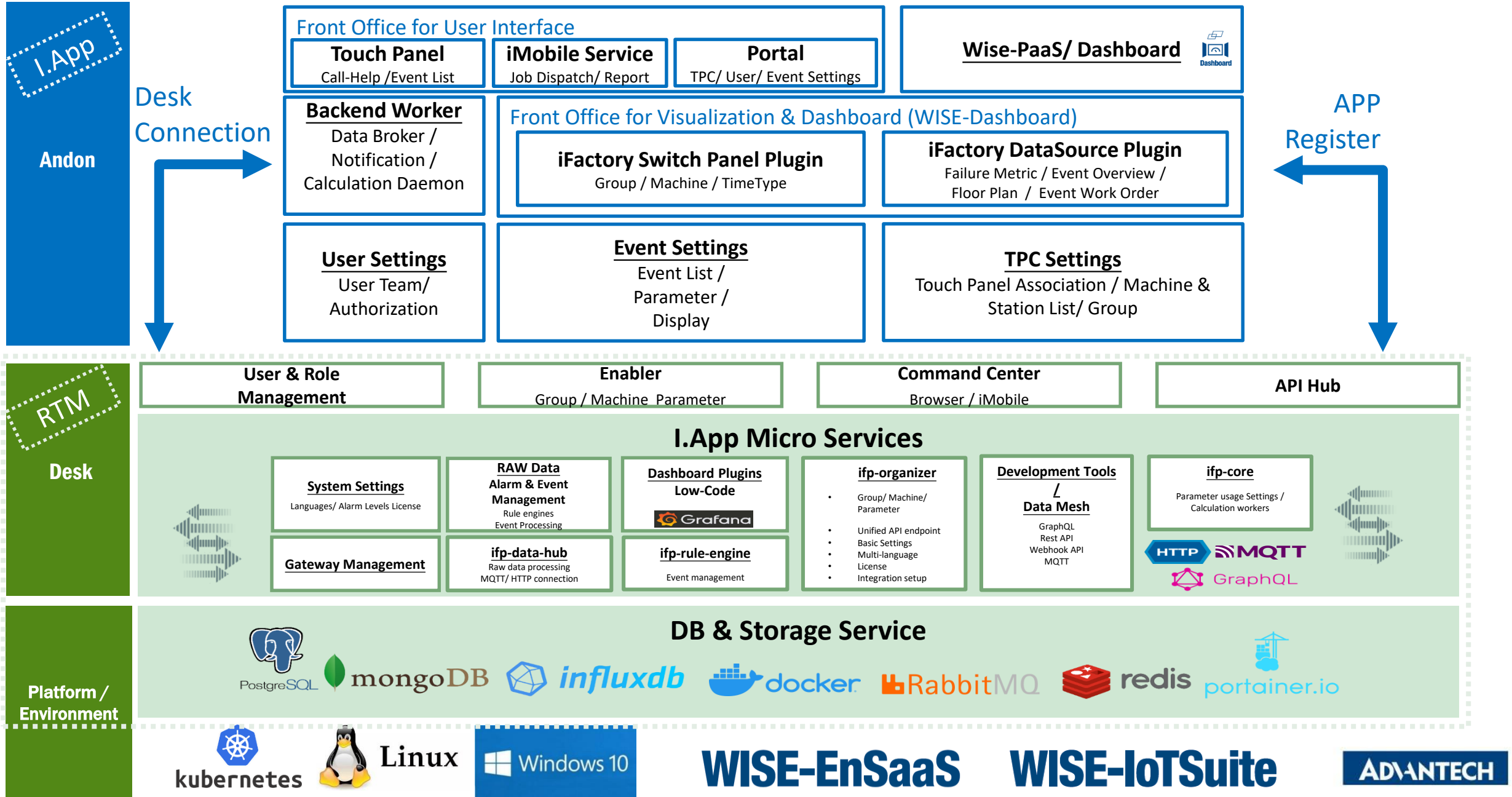
Benefits:

- With the Andon system, the real-time machine status of assembly lines could be better controlled and communication enhanced when interruption events happen. With less downtime, production has grown steadily.

System Diagram



iFactory Andon Architecture



Co-Creating the Future of the IoT World

